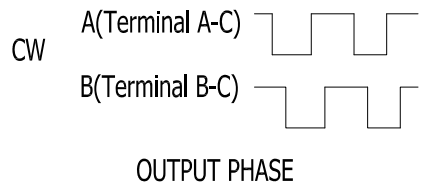
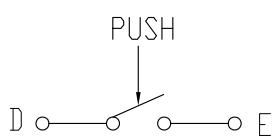
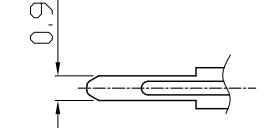
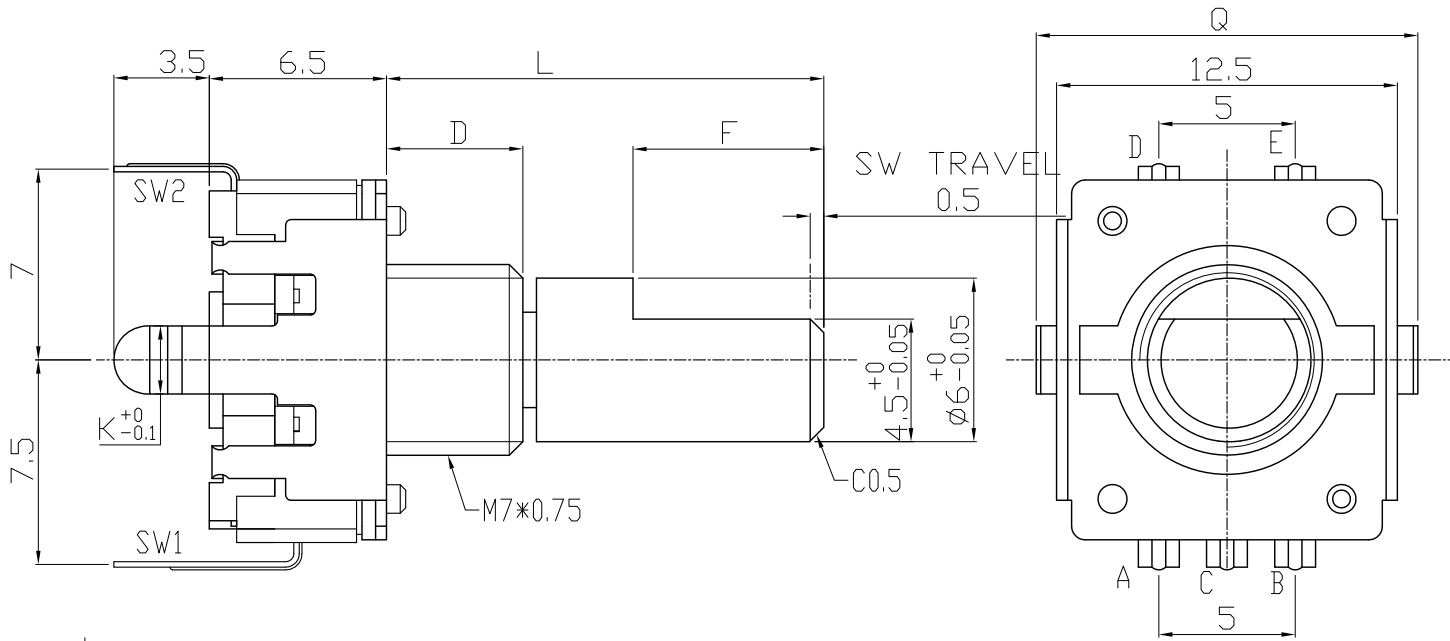


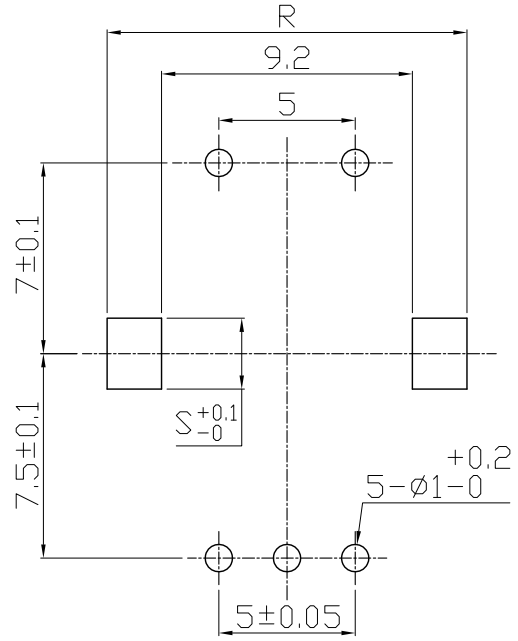
MODEL RE1203 **X** **W** 1-H01

BASIC DIMENSIONS	L ≤ 10	10 < L	100 ≤ L	ANGLE	UNIT
TOL.	±0.3	±0.5	±0.8	±5°	mm



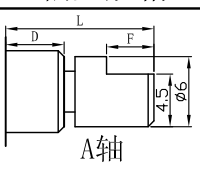
X	B	C
D	5	7

W	B	C
K	2.5	2
Q	14	14
R	13.2	13.2
S	2.6	2.1

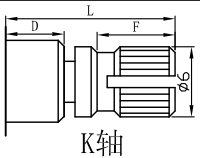


P.C.B. MOUNTING DETAIL

轴型规格



	D=5								D=7			
L	11	11	11	11.5	12	13.5	14	15	17	20	20	30
F	4	4.5	5	5	5	7	6	7	7	6.5	10	12



	D=5					D=7						
L	11.5	12.5	15	20	20	15.3	20	25	28	30	24.5	
F	5	5	7	7	10	7	7	14	12	12	12	